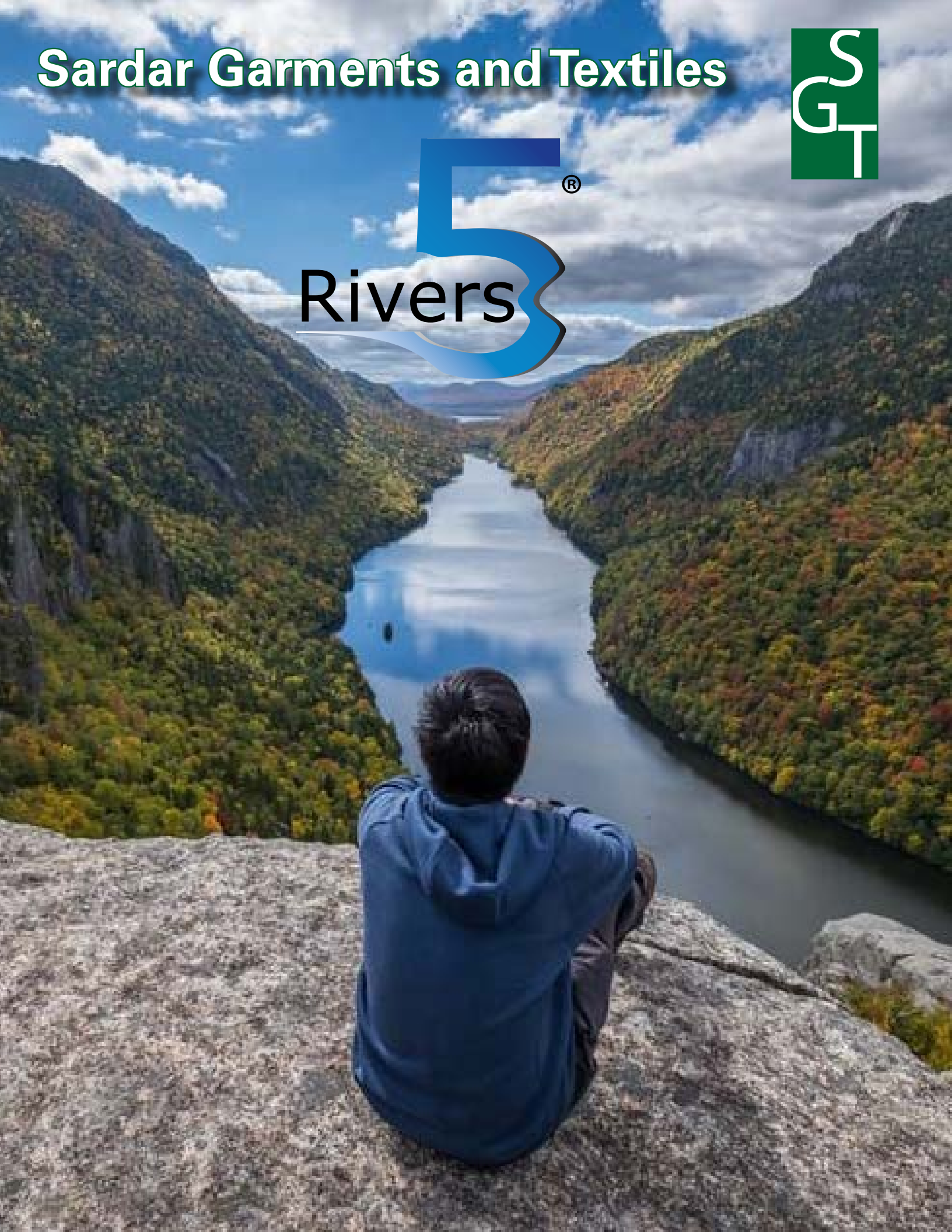


Sardar Garments and Textiles



# ABOUT US

## Sardar Garments and Textiles Inc.

is an established family-owned clothing manufacturing and wholesale business that has recently launched its clothing line in Canada under the name of 5 Rivers. Our team promises to consistently deliver unmatched printable and decorative quality oriented products at a price at par or lower than the biggest firms currently in the market place.

We currently specialize in the manufacturing and wholesale of 100% cotton and poly-cotton blended fabrics such as zipper/pullover hoodies and sport shirts. As we continue to grow in Canada we will introduce more products into our clothing line which will include polar fleece jackets, fleece pants and crew neck sweaters to name a few.

## WHY CHOOSE TO DO BUSINESS WITH US?

- **No minimum order quantity**
- **Fast turnaround time from when the order is placed to delivery**
- **Custom private label manufacturing**
- **No middle man; we produce the product and sell directly to you**
- **We constantly adapt to changing market trends**

## TERMS & CONDITIONS

Placing orders with Sardar Garments and Textiles Inc. acknowledges acceptance of the terms and conditions set forth below:

### PRICES - QUANTITIES - STYLES - COLOURS

All pricing is in Canadian Dollars and is subject to change without notice and subject to sales tax unless exemption documentation is provided when placing the order. All merchandise will be shipped at prices in effect at the time of shipping. It is recommended our vendors call for our current pricing and promotions. Sardar Garments and Textiles Inc. reserves the right to change/modify or discontinue any styles, colours, sizes or fabric without any notice given. Please note that the availability of styles, colours and sizes may fluctuate depending on demand. However, we will always try to maintain a sufficient level of stock in our warehouse.

### ORDER PLACING AND SHIPPING

No minimum order required. All orders from our in-stock inventory which are placed and paid for before 3:00pm will be shipped out via pre-approved shipping options within the same business day. Any amendments made to an existing order waiting to be shipped out will be considered as a NEW ORDER. Please note that we will only accept written orders. Customers who wish to pick up their approved orders can do so within the hours of 10:00am - 5:30pm Monday to Friday unless instructed otherwise. It is the responsibility of the buyer to verify the accuracy of the colours, styles and quantity prior to embellishment on orders which are being shipped out to a third party.

### RETURN POLICY

Please make sure to inspect all goods before printing or decorating. Only goods that have not been altered, dyed or processed in any way can be considered for return. Samples and discontinued items are non-returnable. All claims must be made in writing within four business days from receipt of the goods. Once a return is filed and approved the goods must be returned to our warehouse facility within four business days or the return will be cancelled.

### Note

The coated Pantone Color® reference # presents the closest available match for printing reference. Please refer to the actual fabric swatch for true colour matching. Pantone® is a registered trademark owned by Pantone LLC.

4100

# French Terry Hoodie



**Fabric Content:** 52% Cotton, 48% Polyester  
**Weight:** OZ: 14, GSM: 280

**Specifications:**

- Hooded pullover with flat black draw cords
- Soft, stretch french terry fabric for comfy fit
- Double needle stitching throughout
- Set in sleeves
- 2 x 2 Rib knit cuffs and rib
- Deep pouch pockets

SIZE	F/L(in)	W(in)
Small	26	19.5
Medium	27	21.5
Large	28	23
Extra Large	29	24.5
2X Large	30	26



Black Heather



Grey Heather

8550

# Quarter Zip Cadet Collar Sweatshirt

**Fabric Content:** 50% Cotton, 50% Polyester  
**Weight:** OZ: 14, GSM: 280

**Specifications:**

- Double needle stitching throughout
- Set in sleeves
- 2 X 2 Athletic rib knit cuffs with Lycra
- 2 End fleece
- Antique metal zipper

SIZE	F/L(in)	W(in)
Small	26	19.5
Medium	27	21.5
Large	28	23
Extra Large	29	24.5
2X Large	30	26



Black



Sports Grey



Navy



# 4050

## Adult Tie-Dye Pullover Hoodie



**Fabric Content:** 60% Cotton, 40% Polyester

**Weight:** OZ: 14, GSM: 280

**Specifications:**

- Double needle stitching throughout
- Set in sleeves, Pouch/Kangaroo Pockets
- 2 X 2 Athletic rib cuffs with Lycra
- 2 End fleece

SIZE	F/L(in)	W(in)
Small	26	19.5
Medium	27	21.5
Large	28	23
Extra Large	29	24.5
2X Large	30	26

**Custom Colours Also Available**



Pink Berry



Navy Spiral



Aqua Spiral



Grey Spiral



Marbled Grey



Pink Banana



Sherbert Swirl

# 1001

## Tie-Dye Adult T-Shirt

**Fabric Content:** 60% Cotton, 40% Polyester

**Weight:** OZ: 7.5, GSM: 150

**Specifications:**

- Fine ring spun cotton/polyester
- Relaxed fit
- Taped neck and shoulders
- 1" double needle stitched sleeve and bottom hem
- Satin label
- Treated for extra softness and comfort

SIZE	F/L(in)	W(in)
Small	26	19.5
Medium	27	21.5
Large	28	23
Extra Large	29	24.5
2X Large	30	26

**Custom Colours Also Available**



Navy Spiral



Pink Berry



Aqua Spiral



Sherbert Swirl



Grey Marble



## Tie-Dye Youth Hoodie



**Fabric Content:** 60% Cotton, 40% Polyester  
**Weight:** OZ: 14, GSM: 280

**Specifications:**

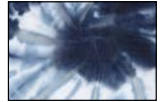
- Double needle stitching throughout
- Set in sleeves, Pouch/Kangaroo Pockets
- 2 X 2 Athletic rib cuffs with Lycra
- 2 End fleece

SIZE	F/L(in)	W(in)
Small	20	16
Medium	22	17.5
Large	24	19

Custom Colours  
Also Available



Grey Marble



Navy Spiral



Aqua Spiral



Pink Berry



Sherbert Swirl

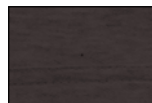
## Youth Pullover

**Fabric Content:** 50% Cotton, 50% Polyester  
**Weight:** OZ: 14, GSM: 280

**Specifications:**

- Double needle stitching throughout
- Set in sleeves | Pouch/ Kangaroo Pockets
- 1 X 1 Athletic rib knit cuffs with lycra
- 3 End Fleece

SIZE	F/L(in)	W(in)
Small	20	16
Medium	22	17.5
Large	24	19



Black



Navy



# 4610

## Nantucket Crew Neck



**Fabric Content:** 52% Cotton, 48% Polyester

**Weight:** OZ: 14, GSM: 280

**Specifications:**

- Double needle stitching throughout
- Set in sleeves
- Special textured look with added softness
- 2 X 2 Athletic knit rib cuffs with lycra
- 3 End fleece

SIZE	F/L(in)	W(in)
Small	25	21
Medium	26	22
Large	27	23
Extra Large	28	24
2X Large	29	25



Navy Heather



Black Heather



Salt N Pepper



Vista Blue



Periwinkle



Sea Grass

# 9100

## Fleece Crew Neck Sweatshirt

**Fabric Content:** 50% Cotton, 50% Polyester Blended Fleece

**Weight:** OZ: 15.95, GSM: 320

**Specifications:**

- Double needle stitching throughout
- 2 X 2 Athletic rib knit cuffs with Lycra
- Set in sleeves
- 2 End fleece
- Bio polished fabric

SIZE	F/L(in)	W(in)
Small	26	19.5
Medium	27	21.5
Large	28	23
Extra Large	29	24.5
2X Large	30	26



Navy



Black



Sports Grey



# Nantucket Pullover Hoodie

**Fabric Content:** 52% Cotton - 48% Polyester

**Weight:** OZ: 14, GSM: 280

**Specifications:**

- Thick flat draw cord
- Double needle stitching throughout
- Set in sleeves
- Pouch/Kangaroo pockets
- 2x2 Athletic knit rib cuffs with lycra
- Special textured look with added softness
- 3 End fleece

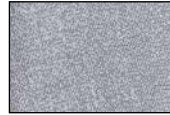
SIZE	F/L(in)	W(in)
Small	25	21
Medium	26	22
Large	27	23
Extra Large	28	24
2X Large	29	25



Navy Heather



Black Heather



Salt N Pepper



Maroon Heather



Vista Blue



Periwinkle



Sea Grass



# 4200BZ

## Youth Zipper Hoodie



**Fabric Content:** 52% Cotton, 48% Polyester  
**Weight:** OZ: 14, GSM: 280

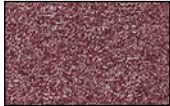
**Specifications:**

- Double needle stitching throughout
- Set in sleeves | Pouch/ Kangaroo Pockets
- 1 X 1 Athletic rib knit cuffs with Lycra
- 3 End Fleece

SIZE	F/L(in)	W(in)
Small	20	16
Medium	22	17.5
Large	24	19
Extra Large	26	20.5



Navy  
Heather



Maroon  
Heather





4250

## Contrast Pullover Hoodie



**Fabric Content:** 50% Cotton, 50% Polyester  
**Weight:** OZ: 14, GSM: 280

**Specifications:**

- Double needle stitching throughout
- Set in sleeves; Pouch/ Kangaroo Pockets
- Contrast color inner hood lining and draw cord
- 2 X 2 Athletic rib knit cuffs with Lycra
- 2 End Fleece

SIZE	F/L(in)	W(in)
Small	26	19.5
Medium	27	21.5
Large	28	23
Extra Large	29	24.5
2X Large	30	26



Navy/Royal



Navy/Red



Black/Red



Navy/Gold



Black/Royal



Black/Gold

6700

## Light Weight Hoodie

**Fabric Content:** 60% Cotton, 40% Polyester  
**Weight:** OZ: 7, GSM: 145

**Specifications:**

- Light weight hooded tee with set in sleeves
- Treated ring spun cotton for superior soft feel
- 1x1 rib on cuffs and hem
- Double needle stitching throughout
- Tear away tag

SIZE	F/L(in)	W(in)
Small	27	21
Medium	29	22
Large	29	23
Extra Large	30	24
2X Large	31	25



Navy Heather



Black



Forest Green Heather



Charcoal Heather



Maroon Heather



# 8700

## Fleece Pullover Hoodie



**Fabric Content:** 50% Cotton, 50% Polyester Blended Fleece

**Weight:** OZ: 14, GSM: 280

**Specifications:**

- Hood with matching drawstring
- Double needle stitching throughout
- Set in sleeves | Pouch Pockets
- 2 X 2 Athletic rib knit cuffs with Lycra
- 2 End fleece
- Bio polished fabric

SIZE	F/L(in)	W(in)
Small	26	19.5
Medium	27	21.5
Large	28	23
Extra Large	29	24.5
2X Large	30	26
3X Large	31	27.5
4X Large	32	29



# 8500

## Fleece Zipper Hoodie

**Fabric Content:** 50% Cotton, 50% Polyester Blended Fleece

**Weight:** OZ: 14, GSM: 280

**Specifications:**

- Hood with matching drawstring
- Double needle stitching throughout
- Set in sleeves | Pouch Pockets
- 2 X 2 Athletic rib knit cuffs with Lycra
- 2 End fleece
- Bio polished fabric

SIZE	F/L(in)	W(in)
Small	26	19.5
Medium	27	21.5
Large	28	23
Extra Large	29	24.5
2X Large	30	26



**7500**

## Bi-Blend Hoodie



Grey

**Fabric Content:** 60% Cotton, 40% Polyester Blended Fleece  
**Weight:** OZ: 14, GSM: 280

**Specifications:**

- Hood with flat matching drawstring
- Double needle stitching throughout
- Set in sleeves | 2.5" rib knit cuffs
- Deep pouch pockets
- 2 End fleece fabric
- Easy tear away tag

SIZE	F/L(in)	W(in)
Small	26	19.5
Medium	27	21.5
Large	28	23
Extra Large	29	24.5
2X Large	30	26
3X Large	31	27.5
4X Large	32	29

**7900**

## Strata Bi-Blend Hoodie

**Fabric Content:** 60% Cotton, 40% Polyester Blended Fleece  
**Weight:** OZ: 14, GSM: 280

**Specifications:**

- Hood with flat matching drawstring
- Double needle stitching throughout
- Set in sleeves | 2.5" rib knit cuffs
- Deep pouch pockets
- 2 End fleece fabric
- Easy tear away tag

SIZE	F/L(in)	W(in)
Small	26	19.5
Medium	27	21.5
Large	28	23
Extra Large	29	24.5
2X Large	30	26



Strata



# 7800

## Speckled Bi-Blend Hoodie



**Fabric Content:** 60% Cotton, 40% Polyester Blended Fleece  
**Weight:** OZ: 14, GSM: 280

**Specifications:**

- Hood with flat matching drawstring
- Double needle stitching throughout
- Set in sleeves | 2.5" rib knit cuff
- Deep pouch pockets
- 2 End fleece fabric
- Easy tear away tag

SIZE	F/L(in)	W(in)
Small	26	19.5
Medium	27	21.5
Large	28	23
Extra Large	29	24.5
2X Large	30	26



Speckled

# 7600

## Blended Hoodie

**Fabric Content:** 60% Cotton, 40% Polyester Blended Fleece  
**Weight:** OZ: 14, GSM: 280

**Specifications:**

- Hood with flat matching drawstring
- Double needle stitching throughout
- Set in sleeves | 2.5" rib knit cuff
- Deep pouch pockets
- 2 End fleece fabric
- Easy tear away tag



Salt & Pepper



Black Heather

SIZE	F/L(in)	W(in)
Small	26	19.5
Medium	27	21.5
Large	28	23
Extra Large	29	24.5
2X Large	30	26



# French Terry Sweat Pants



Grey Heather



Black Heather

**Fabric Content:** 52% Cotton, 48% Polyester

**Weight:** OZ: 14, GSM: 280

**Specifications:**

- 2" Elasticated waist band
- Relaxed fit with two side pockets
- Flat back draw cord
- 1" Elasticated bottom opening

SIZE	L(in)	Inseam	Outseam
Small	13	29	41.5
Medium	14	29.5	42.5
Large	15	30	43.5
Extra Large	16	30.5	44.5
2X Large	17	31	45.5
3X Large	18	31.5	46.5

# 4200B

## Youth Hoodie



**Fabric Content:** 52% Cotton, 48% Polyester Blended Fabric

**Weight:** OZ: 14, GSM: 280

**Specifications:**

- Double needle stitching throughout
- Set in sleeves | Pouch/ Kangaroo Pockets
- 1 X 1 Athletic rib knit cuffs with lycra
- 3 End Fleece

SIZE	F/L(in)	W(in)
Small	20	16
Medium	22	17.5
Large	24	19
Extra Large	26	20.5



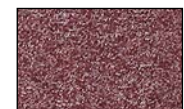
Charcoal Heather



Graphite Heather



Navy Heather



Maroon Heather

# 5200

## Womens Pullover



**Fabric Content:** 60% Cotton, 40% Polyester Blended Fabric

**Weight:** OZ: 14, GSM: 280

**Specifications:**

- Neon inner hood and drawstring
- Contrast rib with thumbholes
- Over Lock stitching throughout
- Set in sleeves
- 3 End Fleece

SIZE	F/L(in)	B/L(in)	W(in)
Small	25	27	18.5
Medium	26	28	20.5
Large	27	29	22.5
Extra Large	28	30	24.5
2X Large	29	31	26.5



Charcoal Red



Charcoal Lime



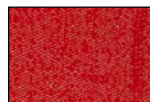
Charcoal Purple



Charcoal Pink



Charcoal Black



Red Heather



Black Heather



Navy Heather

# 4200

## Tri-Blend Hoodie

**Fabric Content:** 52% Cotton, 48% Polyester Blended Fabric

**Weight:** OZ: 14, GSM: 280

**Specifications:**

- Hood with matching flat drawstrings
- Double needle stitching throughout
- Set in sleeves | Pouch/ Kangaroo Pockets
- 2 X 2 Athletic rib knit cuffs with Lycra
- 3 End Fleece

SIZE	F/L(in)	W(in)
Small	26	19.5
Medium	27	21.5
Large	28	23
Extra Large	29	24.5
2X Large	30	26



Navy Heather



Maroon Heather



Charcoal Heather



Graphite Heather



## Nantucket Raglan



**Fabric Content:** 52% Cotton, 48% Polyester

**Weight:** OZ: 14, GSM: 280

**Specifications:**

- Double needle stitching throughout
- Set in sleeves, Pouch/Kangaroo pockets
- 2 tone raglan hood with matching sleeves and thick flat drawcord
- 2x2 athletic knit rib cuffs with lycra
- Special textured look withn added softness
- 3 end fleece

SIZE	F/L(in)	W(in)
Small	25	21
Medium	26	22
Large	27	23
Extra Large	28	24
2X Large	29	25



Navy with Salt  
N Pepper Body



Black with Salt  
N Pepper Body

## Nantucket Zipper Hoodie

**Fabric Content:** 52% Cotton, 48% Polyester

**Weight:** OZ: 14, GSM: 280

**Specifications:**

- Double needle stitching throughout
- Set in sleeves, Pouch/Kangaroo pockets
- Thick flat drawcord
- Metal zipper and puller
- 2x2 athletic knit rib cuffs with lycra
- Special textured look withn added softness
- 3 end fleece



Black Heather



Navy Heather

SIZE	F/L(in)	W(in)
Small	25	21
Medium	26	22
Large	27	23
Extra Large	28	24
2X Large	29	25



