



**APPAREL WHOLESAL
CATALOG 2026**

ABOUT US

Sardar Garments And Textiles Inc.

Sardar Garments and Textiles, the wholesale arm of Sardar Dyeing, has been a prominent player in the Toronto apparel market for the past seven years. As part of a family-owned apparel manufacturing business founded in Pakistan in 1983, we leverage our fully integrated production facilities, which include in-house knitting, dyeing, and stitching units. This vertical integration enables us to specialize in a wide range of fleece garments and deliver high-quality products at competitive prices directly to our buyers.

In our seven years serving the Canadian market, we have offered a diverse array of distinctive fleece styles that help our clients distinguish themselves from the competition. Our steadfast commitment to quality and personalized service remains central to our success and the ongoing growth of our clients.

WHY CHOOSE TO DO BUSINESS WITH US?

- No minimum order quantity
- Fast turnaround time from when the order is placed to its delivery
- Custom private label manufacturing
- No middle man; we produce the product and sell it directly to you
- We constantly adapt to changing market trends

TERMS & CONDITIONS

Placing orders with Sardar Garments and Textiles Inc. acknowledges acceptance of the terms and conditions set forth below:

PRICES - QUANTITIES - STYLES - COLORS

All pricing is in Canadian Dollars and is subject to change without notice and subject to sales tax unless exemption documentation is provided when placing the order. All merchandise will be shipped at prices in effect at the time of shipping. It is recommended our vendors call for our current pricing and promotions. Sardar Garments and Textiles Inc. reserves the right to change/ modify or discontinue any styles, colors, sizes or fabrics without any notice given. Please note that the availability of styles, colors and sizes may fluctuate depending on demand. However, we will always try to maintain a sufficient level of stock in our warehouse.

ORDER PLACING AND SHIPPING

No minimum order required. All orders from our in-stock inventory which are placed and paid for before 3.00 pm will be shipped out via pre-approved shipping options within the same business day. Any amendments made to an existing order waiting to be shipped out will be considered as a NEW ORDER. Please note that we will only accept written orders. Customers who wish to pick up their approved orders can do so within the hours of 10.00 am - 5.30 pm Monday to Friday unless instructed otherwise. It is the responsibility of the buyer to verify the accuracy of the colors, styles and quantity prior to embellishment on orders which are being shipped out to a third party.

RETURN POLICY

Please make sure to inspect all goods before printing or decorating. Only goods that have not been altered, dyed or processed in any way can be considered for return. Samples and discontinued items are non-returnable and non-refundable. All claims must be made in writing within four business days from the receipt of the goods. Once a return is filed and approved the goods must be returned to our warehouse facility within four business days or the return will be cancelled.

NOTE

The coated Pantone color® reference # presents the closest available match for printing reference. Please refer to the actual fabric swatch for true color matching. Pantone® is a registered trademark owned by Pantone LLC.

FULL ZIP JACKET

3100



SPECIFICATIONS

- Premium full-length metal zipper for a sleek, durable finish
- Two convenient side pockets designed for everyday functionality
- 1x1 rib cuffs that hold their shape and enhance comfort
- Stand-up collar for a clean, modern silhouette
- Engineered with low-shrinkage fabric to maintain fit, structure, and long-term wear

FABRIC CONTENT

- Premium 50% cotton
- 50% polyester fleece blend

WEIGHT

- GSM: 450
- OZ: 22.2

SIZE

- S to 2XL

COLORS



BLACK

NANTUCKET ZIPPER 4630



SPECIFICATIONS

- Flat dyed to match draw cord
- Double needle stitching throughout.
- Ribbed cuffs and waistband
- Deep front Kangaroo pocket
- Low pill, high stitch density fabric for ultimate comfort
- Terry Fleece

FABRIC CONTENT

- 52% Cotton
- 48% Polyester

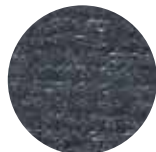
WEIGHT

- OZ: 14
- GSM: 280

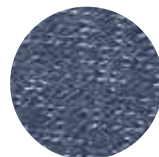
SIZE

- S to 3XL

COLORS



BLACK
HEATHER



NAVY
HEATHER

CLASSIC ZIPPER 8500



SPECIFICATIONS

- Hood with matching drawstring
- Double needle stitching throughout
- Set in sleeves | Pouch Pockets
- 2 X 2 Athletic rib knit cuffs with Lycra
- 2 End fleece

FABRIC CONTENT

- 60% Cotton
- 40% Polyester

WEIGHT

- OZ: 14
- GSM: 280

SIZE

- S to 3XL

COLORS



BLACK



NAVY

NANTUCKET 1/4 ZIP

4650

SPECIFICATIONS

- Double needle stitching throughout
- Ribbed cuffs and waistband
- Heavy texture fabric
- Low pill, high stitch density fabric for ultimate comfort
- Terry fleece

FABRIC CONTENT

- 52% Cotton
- 48% Polyester

WEIGHT

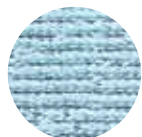
- GSM: 280
- OZ: 14

SIZE

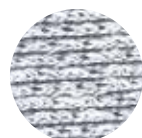
- S to 2XL



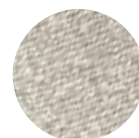
COLORS



SEA GRASS



SALT N PEPPER



LT BROWN

GARMENT DYE

¼ ZIP

4850



SPECIFICATIONS

- Garment dyed for vintage look
- Dyed to match plastic zip
- Double Needle Top Stitch on All Seams
- 2x2 Ribbing on cuffs and waist band
- 3 End Fleece

FABRIC CONTENT

- 60% Cotton
- 40% Polyester

WEIGHT

- OZ: 14
- GSM: 280

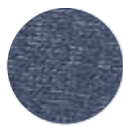
SIZE

- S to 3XL

COLORS



BLACK



NAVY



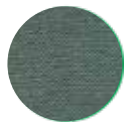
CHARCOAL



CAMEL



CHOCOLATE
BROWN



FOREST
GREEN



MAROON

QUARTER ZIPPER 8550



SPECIFICATIONS

- Double needle stitching throughout
- Set in sleeves
- 2 x 2 Athletic rib knit cuffs with Lycra
- 2 End fleece
- Antique metal zipper

FABRIC CONTENT

- 50% Cotton
- 50% Polyester

WEIGHT

- OZ: 14
- GSM: 280

SIZE

- S to 2XL

COLORS



NAVY



BLACK



SPORT GREY

YOUTH VARSITY JACKET

2120 B



SPECIFICATIONS

- Ribbed: Collar
- Regular Fit
- Sleeves: Rib-knit elements
- Button Placket: Full-length with metal buttons

FABRIC CONTENT

- 60 % Cotton
- 40 % Polyester

WEIGHT

- O Z: 8.30
- GSM: 280

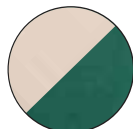
SIZE

- S to 2XL

COLORS



BLACK/
NATURAL



FOREST GREEN
/NATURAL



NAVY/
NATURAL



MAROON/
NATURAL

YOUTH NANTUCKET PULLOVER

4600B



SPECIFICATIONS

- Double needle stitching throughout.
- Ribbed cuffs and waistband
- Heavy textured fabric
- Low pill, high stitch density fabric for ultimate comfort
- Terry fleece

FABRIC CONTENT

- 52% Cotton
- 48% Polyester

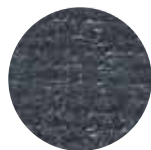
WEIGHT

- OZ: 14
- GSM: 280

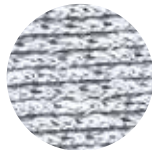
SIZE

- S to L

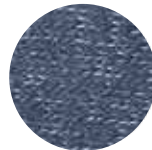
COLORS



CHARCOAL
HEATHER



SALT N
PEPPER



NAVY
HEATHER



LT BROWN

YOUTH CLASSIC HOODIE

8700B



SPECIFICATIONS

- Double needle stitching throughout
- Set in sleeves
- 1x1 Athletic rib and cuffs
- 2 End fleece

FABRIC CONTENT

- 50% Cotton
- 50% Polyester

WEIGHT

- OZ: 14
- GSM: 280

SIZE

- S to L

COLORS



BLACK



NAVY



POOL
DAY

CONTRAST CLASSIC HOODIE

4250



SPECIFICATIONS

- Flat contrasting color drawcord and inner hood lining
- Double needle stitching throughout.
- Ribbed cuffs and waistband
- Deep front Kangaroo pocket
- 2 End fleece fabric

FABRIC CONTENT

- 60% Cotton
- 40% Polyester

WEIGHT

- OZ: 14
- GSM: 280

SIZE

- S to 2XL

COLORS



BLACK/GOLD



BLACK/RED



NAVY/RED



NAVY/GOLD



BLACK/ROYAL



NAVY/ROYAL

NANTUCKET ADULT HOODIE

4600



SPECIFICATIONS

- Double needle stitching throughout.
- Ribbed cuffs and waistband
- Heavy textured fabric
- Low pill, high stitch density fabric for ultimate comfort
- Terry fleece

FABRIC CONTENT

- 52% Cotton
- 48% Polyester

WEIGHT

- OZ: 14
- GSM: 280

SIZE

- S to 3XL

COLORS



SEA GRASS



PERIWINKLE



VISTA BLUE



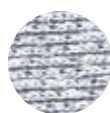
OATMEAL



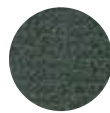
SOFT YELLOW



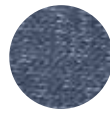
ICE PINK



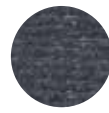
SALT N PEPPER



FOREST
GREEN



NAVY
HEATHER



BLACK
HEATHER



ICE BLUE

NANTUCKET RAGLAN PULLOVER

4620



SPECIFICATIONS

- Flat contrast color draw cord
- Raglan Sleeves
- Two ply contrast color hood to match sleeves
- Double needle stitching throughout.
- Ribbed cuffs and waistband
- Deep front Kangaroo pocket
- Low pill, high stitch density fabric for ultimate comfort
- Terry fleece

FABRIC CONTENT

- 52% Cotton
- 48% Polyester

WEIGHT

- OZ: 14
- GSM: 280

SIZE

- S to 2XL

COLORS



NAVY HEATHER
WITH
SALT N PEPPER



BLACK HEATHER
WITH
SALT N PEPPER

WAFFLE PULLOVER

4700



SPECIFICATIONS

- Textured knit for optimal warmth and durability
- No drawcord for clean look
- Double needle stitching throughout
- Set in sleeves
- 1 x 1 Rib knit cuffs and rib
- Deep pouch pockets

FABRIC CONTENT

- 60% cotton
- 40% polyester

WEIGHT

- OZ: 14
- GSM: 300

SIZE

- S to 2XL

COLORS



BLACK



SPORT GREY



BONE



CHARCOAL
HEATHER

GARMENT DYE PULLOVER

4800



SPECIFICATIONS

- Flat contrasting color drawcord and inner hood lining
- Double needle stitching throughout.
- Ribbed cuffs and waistband
- Deep front Kangaroo pocket
- 2 End fleece fabric

FABRIC CONTENT

- 60% Cotton
- 40% Polyester

WEIGHT

- OZ: 14
- GSM: 280

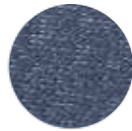
SIZE

- S to 3XL

COLORS



BLACK



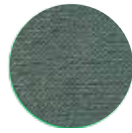
NAVY



CHARCOAL



CAMEL



FOREST
GREEN



CHOCOLATE
BROWN

LIGHT WEIGHT HOODIE

6700



SPECIFICATIONS

- Light weight hooded tee with set in sleeves
- Treated ring spun cotton for superior soft feel
- 1×1 Rib on cuffs and hem
- Double needle stitching throughout

FABRIC CONTENT

- 60% Cotton
- 40% Polyester

WEIGHT

- OZ: 7
- GSM: 145

SIZE

- S to 2XL

COLORS



FOREST GREEN
HEATHER



BLACK



CHARCOAL
HEATHER



MAROON
HEATHER



NAVY
HEATHER

CLASSIC HOODIE

8700



SPECIFICATIONS

- Hood with matching drawstring
- Double needle stitching throughout
- Set in sleeves | Pouch Pockets
- 2 X 2 Athletic rib knit cuffs with Lycra
- 2 End fleece

FABRIC CONTENT

- 60% Cotton
- 40% Polyester

WEIGHT

- OZ: 14
- GSM: 280

SIZE

- S to 3XL

COLORS



BLACK



NAVY



SPORT GREY



MAROON



POOL DAY



KOALA GREY



RED



FOREST
GREEN



CHARCOAL
HEATHER



ROYAL
BLUE



DARK
GREY



SAND

HEAVYWEIGHT PULLOVER HOODIE

8800



SPECIFICATIONS

- Double fleece-lined hood for added warmth and structure
- Modern flat drawcords for a clean, contemporary look
- Functional details: kangaroo pocket, rib-knit cuffs and hem,
- Engineered for low shrinkage to maintain fit and shape

FABRIC CONTENT

- Premium 50% cotton
- 50% polyester fleece blend

WEIGHT

- GSM: 450
- OZL: 22.2

SIZE

- S to 2XL

COLORS



BLACK

NANTUCKET CREWNECK

4610



SPECIFICATIONS

- Double needle stitching throughout.
- Ribbed cuffs and waistband
- Heavy textured fabric
- Low pill, high stitch density fabric for ultimate comfort
- Terry fleece

FABRIC CONTENT

- 52% Cotton
- 48% Polyester

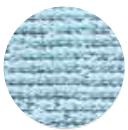
WEIGHT

- OZ: 14
- GSM: 280

SIZE

- S to 3XL

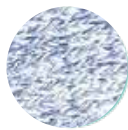
COLORS



SEA GRASS



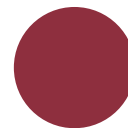
PERIWINKLE



VISTA BLUE



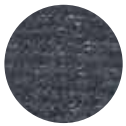
LAVENDER



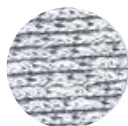
BURGUNDY



SOFT YELLOW



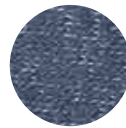
BLACK
HEATHER



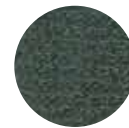
SALT N PEPPER



OATMEAL



NAVY
HEATHER



FOREST
GREEN



ICE BLUE

GARMENT DYE CREWNECK

4810



SPECIFICATIONS

- Garment dyed for vintage look
- Dyed to match plastic zip
- Double Needle Top Stitch on All Seams
- 2x2 Ribbing on cuffs and waist band
- 3 End Fleece

FABRIC CONTENT

- 60% Cotton
- 40% Polyester

WEIGHT

- OZ: 14
- GSM: 280

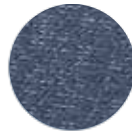
SIZE

- S to 3XL

COLORS



BLACK



NAVY



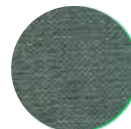
CHARCOAL



CAMEL



CHOCOLATE
BROWN



FOREST
GREEN



MAROON

VARSITY JACKET

2120



SPECIFICATIONS

- Ribbed: Collar
- Regular Fit
- Sleeves: Rib-knit elements
- Button Placket: Full-length with metal buttons

FABRIC CONTENT

- 60% Cotton
- 40% Polyester

WEIGHT

- OZ: 8.30
- GSM: 280

SIZE

- S to 2XL

COLORS



BLACK/
NATURAL



FOREST GREEN
/NATURAL



NAVY/
NATURAL



MAROON/
NATURAL

TOTE BAG 1100

SPECIFICATIONS

- Width: 19.5 inches
- Height: 12.75 inches

FABRIC CONTENT

- 100% Cotton

WEIGHT

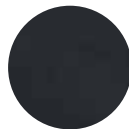
- GSM: 160-180



COLORS



NATURAL



BLACK



FOREST
GREEN



NAVY



MAROON



Sardar Garments and Textiles.Inc

WE ARE CERTIFIED BY:



+1 (647) 667-5530



www.5riversapparel.com



[5riverapparel](https://www.instagram.com/5riverapparel)



Unit 12, 80 Midwest Road, Scarborough,
Ontario M1P4R2



info@sardargarments.com